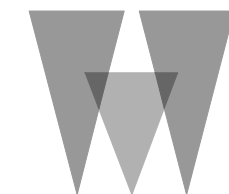


SITE INFORMATION

DISTURBED AREA = 1.66 ACRES
 IMPERVIOUS AREA = 0.43 ACRES
 100 YEAR FLOOD ELEVATION = 5.00'
 APPROX. FILL = 3725 CU YDS

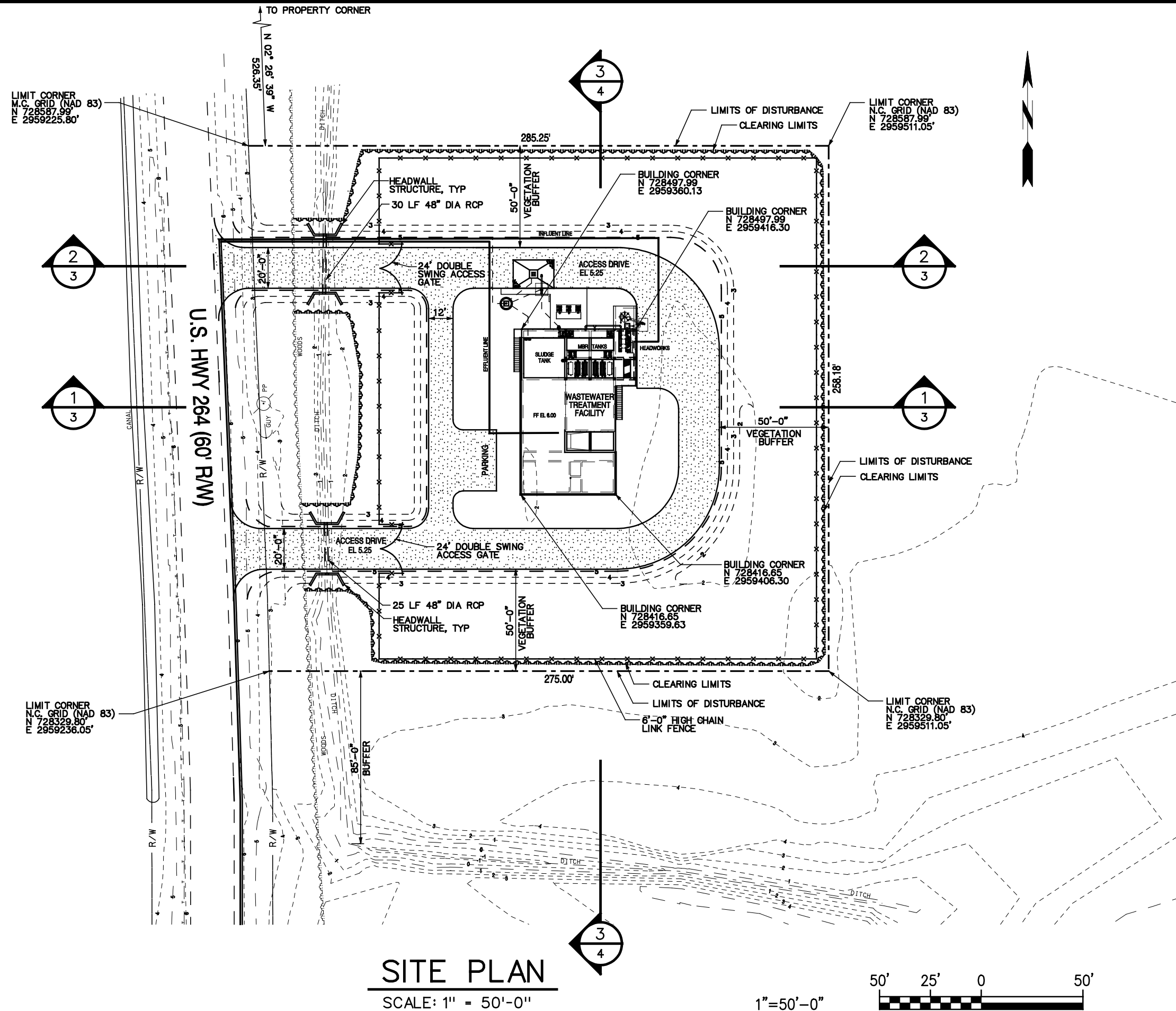
SITE PLAN STUMPY POINT N.C.

PROPOSED DARE COUNTY WASTEWATER TREATMENT FACILITY



THE WOOTEN COMPANY

ENGINEERING | PLANNING | ARCHITECTURE
 120 North Boylan Avenue Raleigh NC 27603-1423
 919.828.0531 fax 919.834.3589



SITE PLAN

SCALE: 1" = 50'-0"

1"=50'-0"